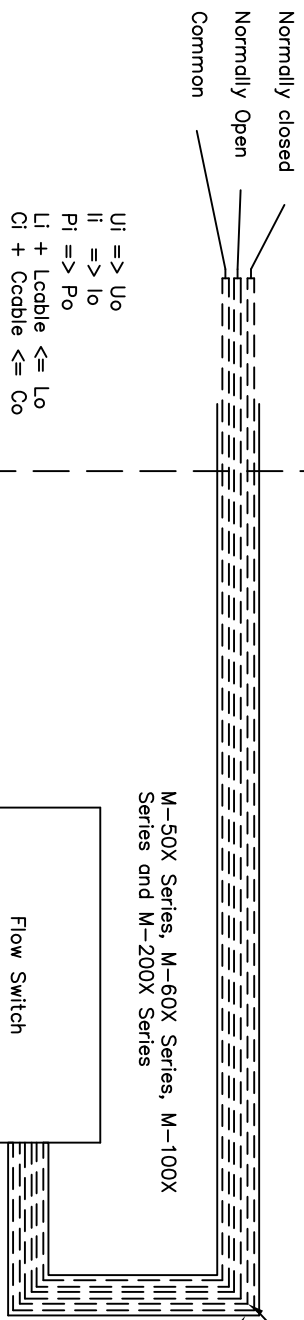


NON-HAZARDOUS AREA

SPDT reed switch has 3 wires
SPST reed switch has 2 wires

HAZARDOUS AREA (Zone 0, 1, 2)

SPDT and SPST reed switch
Hermetically Sealed

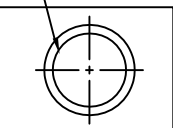


WIRE OR CABLE LENGTH SHOULD NOT EXCEED ENTITY PARAMETERS CRITERIA. AWG 24 to 18, 1180 UL

CUSTOMER INSTALLS APPROPRIATE CABLE GLAND AND CONDUIT. See note 1

CABLE GLAND CONNECTION

Flow Switch



Reed Switch Specifications:

	SPDT	SPST
Switching voltage:	170 VDC	200 VDC
Breakdown voltage:	200 VDC	250 VDC
DC Resistive:	3 Watts	10 Watts
AC Resistive:	3 Watts	10 Watts
Switching current:	0.25 A	0.5 A
Carrying Current:	0.5 A	1.2 A

Recommendations:

1. Customer should always use a barrier to limit the energy supplied to the device.
2. Customer should always provide full details on their application to Malema.
3. The device should always be grounded.
4. Wiring method should be in accordance with electrical code requirements of the country of end use based on class/group classification.
5. Do not Parallel Associate Apparatus unless Permitted by associated apparatus approval.

Atex Certificate:

No: ISSep08ATEX028X
ISSep08ATEX027

ENTITY PARAMETERS

Maximum voltage (U _I)	30 V
Maximum allowable current (I _I)	0.5 A
Total capacitance of Circuit Allowable (C _I)	40 pF
Total inductance of Circuit Allowable (L _I)	4 uH
Total Power of Circuit Allowable (P _I)	0.7 W

Please refer to Malema's Data Sheets for additional details on Body type, Connection size and type.

MALEMA FLOW SENSORS
CONFIDENTIAL

Conditions of safe use
To ensure suitability for Group II, there switches must be used with a cable fitting having an IECEx certification with a minimum IP5X rating.
Warning – Enclosure contains aluminum. Care must be taken to avoid ignition due to impacts or friction.

Only the SS316, Brass 360, Monel K500, or Hastelloy C276 is IEC certified.

Applicable Standards:

IEC 60079-0 6th, IEC 60079-11 6th and IEC 60079-26 2nd

UNAUTHORIZED USE, MANUFACTURE OR REPRODUCTION IN WHOLE OR IN PART IS PROHIBITED. DRAWINGS AND ALL OTHER DISCLOSURES ARE PROPERTY OF MALEMA ENGINEERING CORPORATION.

PART NAME		EXPLOSION PROOF SWITCHES		REV		MATERIAL		SCALE		SHEET	
EX-PRDF FLOW SWITCHES		002		NA				--		1 OF 1	
DRN. J.Z.	DATE 10/15/13	UNLESS OTHERWISE SPECIFIED DIMENSIONS ARE IN INCHES	TOLERANCES: DN	.X	±.03	.XX	±.01	.XXX	±.005	ANGLES	± 1°
CHKD. U.S.	DATE 10/15/13										
APPD. S.L.	DATE 10/15/13										
<p>malema Malema Engineering Corporation 1101 S. ROGERS CIRCLE, #15 BOCA RATON, FL 33487</p>											

Note 1: Where the cable capacitance and inductance per foot are not known, the following values shall be used: Ccable = 60 pF/ft., Lcable = 0.2 uH/ft."